



Provides you with solutions

Made in France

BATIMAT PARIS EXPO
PORTE DE
VERSAILLES
03-06 OCT 2022
Connecte les pros à l'innovation

POLE
FRANCE
COFFRAGE

COFFRAGE
ETAIEMENT
SECURITE

The place to build


Mills designer of innovative products...

MILLS is a leading **French manufacturer**. The company designs, sells, rents and installs its products of **falsework, formwork, access and scaffolds**. With a turnover of €44 million in 2021, Mills employs 150 peoples and has **9 branches in France** and subsidiaries in **Brazil** and **Algeria**. Mills conducts 20% of its business internationally.



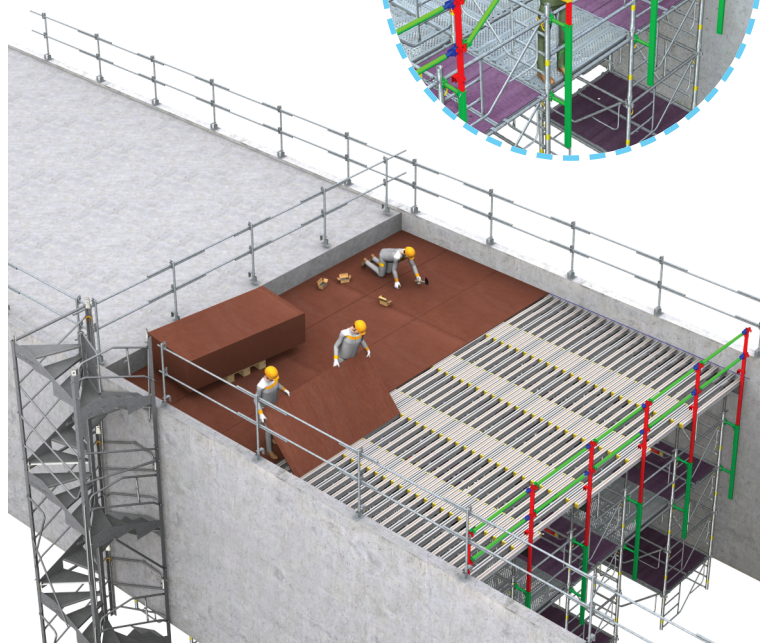
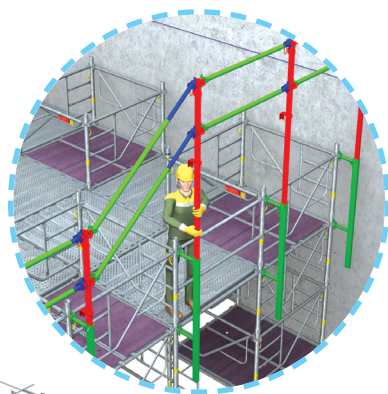
GCC Mills : Guardrail for formwork with safe installation system...

Combined with the Tourechaf falsework towers and MP3 beams, the **GCC Mills** makes it possible for the first time to assemble and dismantle in collective protection (without individual fall arrest system) a traditional formwork on falsework towers.

The guardrail of the future formwork is installed from the falsework even before the beams are laid. The operator then installs the primary and secondary beams from the falsework. He can then lay the plywood in collective protection with the guardrail already in place. The GCC upright is extendable. Adjusting the extension is easy because it depends only on the formwork altimetry and not on the jacks output or the beams height. 



Patented system



Advantages :

- > Simple and quick implementation without individual fall arrest system.
- > Adjustable to the jacks output of the falsework and formwork thickness according to the formwork altimetry.
- > Visual indicator for fast adjustment.
- > Accepts non-metric spacing between uprights.
- > Light parts <15 kg.
- > Requires only a hammer.
- > Extendable rails and upright with anti-release device (no loose parts).
- > Upright with hand guard and anti-finger trap system.
- > Lockable upright slide for transport.
- > Meets the requirements of the EN 13374-A standard related to temporary peripheral guardrails.
- > Compatible with mesh barriers.
- > Possibility of creating open or closed angles (balcony formwork).

Assemble and dismantle a traditional formwork on falsework towers in collective protection and without individual fall arrest system)...





Provides you with solutions

Made in France

BATIMAT PARIS EXPO
PORTE DE VERSAILLES
03-06 OCT 2022
Connecte les pros à l'innovation

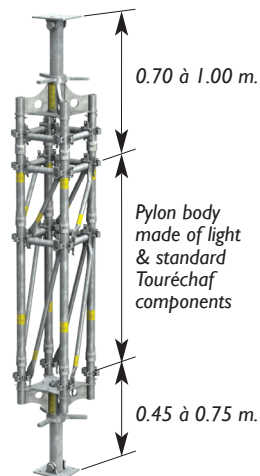
POLE FRANCE COFFRAGE

COFFRAGE
ETALEMENT
SECURITE

The place to build

Mills provide you SOLUTIONS...

NEW !



Standard Pylon.

Pylon body made of light & standard Touréchaf components

Pylon Mills Touréchaf...

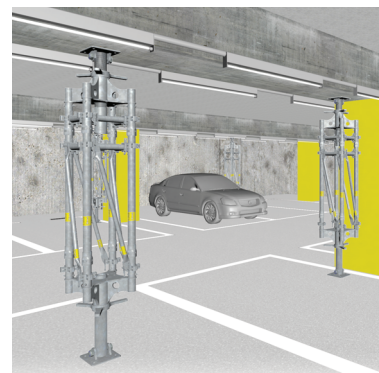
The Touréchaf Pylon is a heavy duty prop. It has a bearing capacity of 275 kN.

Its design complies with EN 12812 standard. Made of Touréchaf components it has great modularity thanks to its compatibility with our scaffolding equipment.

Quick to assemble : the uprights lock without pins by rotation and the ledgers and diagonals by simple keying.

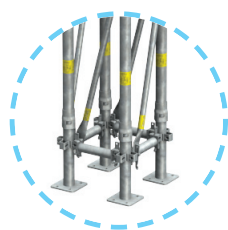
Operationnal : easily add access, circulation decking or bracing using Touréchaf equipment

Ergonomic : It can be assembled horizontally and has lifting rings at its ends.

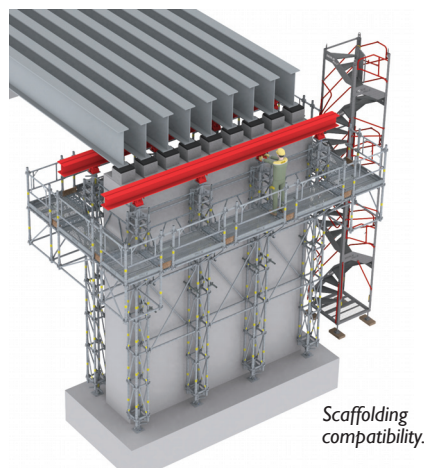


Advantages :

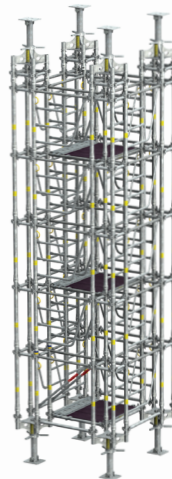
- > Heavy duty : 275 kN of bearing capacity.
- > Scaffolding compatibility.
- > Small footprint when dismantled.



Start with bases.



Scaffolding compatibility.



Heavy duty tower.
Example for a tower with a bearing capacity of 960 kN.

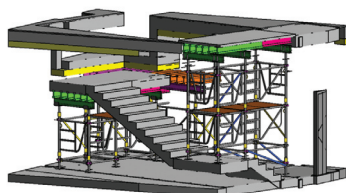
NEW !



Software innovation...

Our business software **NOEMI BIM** has a new functionality for structural calculations.

From a 3D modeling in Revit, the software automatically checks the technical feasibility of the falsework and formwork system. It generates a calculation note instantly



nb. mills noemi bim

CONTACT

MILLS : 82, rue Edouard Vaillant | 93351 LE BOURGET CEDEX FRANCE | T : 01 48 35 65 65
E-mail : info@mills.fr | www.mills.fr

