

Wall brackets 5 and 2.5T

The 5T and 2.5T wall bracket are heavy-duty brackets designed to support heavy loads. They are used when shoring towers are difficult to implement.



> WALL BRACKET 5T

Designation	Code	Weight in kg
Wall bracket 5T	080460-9	15

SWL SLS : 50 kN

Hot-dip galvanised.



> WALL BRACKET 2.5T

Designation	Code	Weight in kg
Wall bracket 2.5T	080462-5	6.4

SWL SLS : 25 kN

> MILLS equipment compatibility

Wall brackets are compatible with all MILLS's adjustable heads.

> Simple to install and remove

Lightweight, weighing respectively 15 and 6 kg, they reduce risks of MSDs.

Anchors are reachable even with an adjustable head mounted on, which eases removing wall brackets.

For an even easier removal, we advise a Touréchaf short adjustable head.

Adding a beam parallel to the wall gives a tolerance during the adjustable heads' installation.



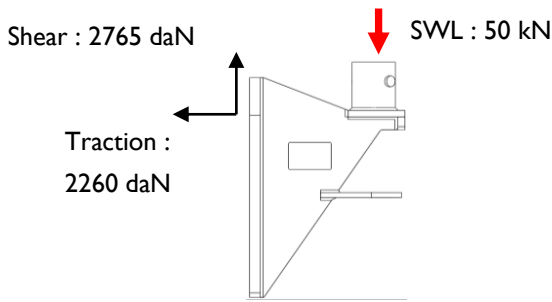
2.5T Wall bracket removal

Wall brackets 5 and 2.5T

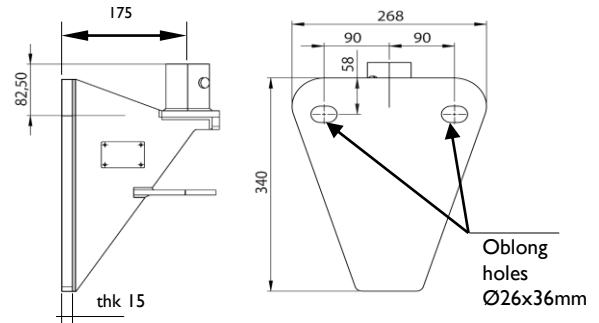
> Anchors

Maximum reactions SLS per anchor :

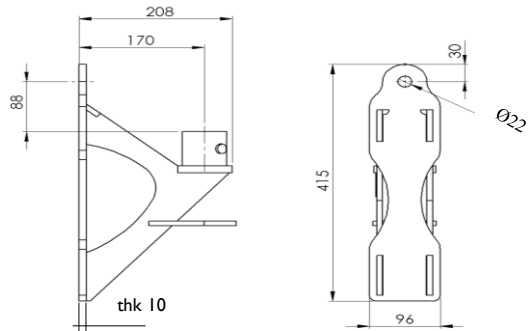
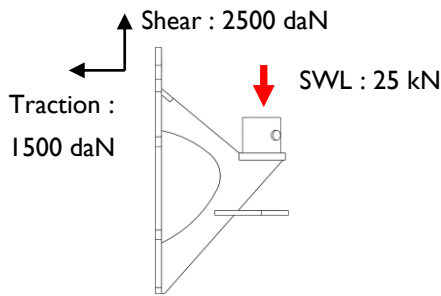
Wall bracket 5T



> Dimensions



Wall bracket 2.5T



> Anchor bolts examples

Full capacity loaded

Heavy-duty expansion anchor
Hilti HSL-4 M16.



REQUIREMENTS :

Example for an anchoring set on at least uncracked C20/25 class concrete of a 30cm thickness minimum. Without end effect. Implementation depth 12.5cm.

Alternative for a reduced load

- If the wall bracket 5 T is loaded at **max. 32 kN SLS***.
- If the wall bracket 2.5 T is loaded at **max. 19 kN SLS***.

Concrete screw
Hilti HUS3 M14 x130.



* Limited load by concrete class

REQUIREMENTS :

Example for an anchoring set on at least uncracked C20/25 class concrete of a 25cm thickness minimum. Without end effect. Implementation depth 11.5cm and 17x40x3 washers needed.



WARNING :

For any other usage and in either case, it is mandatory to refer to the latest recommendations of the anchor bolt supplier.